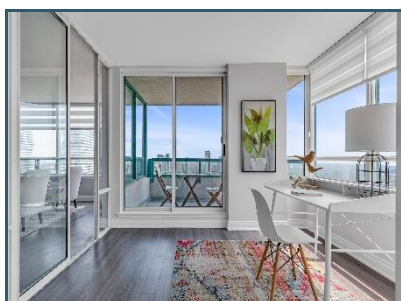
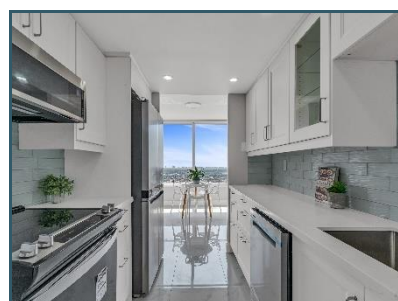
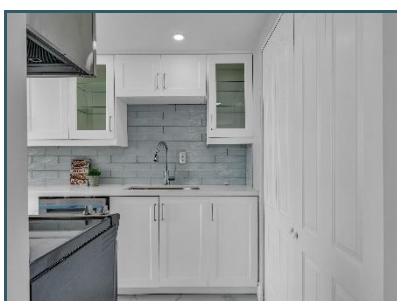


SOLD

Representing
Seller

LPH03-550 WEBB DR.



This gorgeous 1450 sq. ft. lower penthouse is one of the largest units in 'The Phoenix' condo building and was newly renovated prior to listing. Floor to ceiling windows throughout offer uninterrupted views of the downtown Toronto skyline, CN tower and the lake. Updated finishes include a modern kitchen with granite countertops and newly purchased, never used stainless steel appliances, beautifully upgraded washrooms with porcelain and granite finishes, walk-in closets and custom motorized blinds. The list of upgrades goes on and on. This suite has two very generous sized bedrooms, with an additional solarium easily used as a home office or third bedroom. This condo is a dream come true.

To view more of this beautiful home, [click here](#).

DAVID
NICHOLS

List Price:	\$859,000	Sale Price:	\$818,000
Community:	Mississauga City Centre (Peel)		
Type:	Condo Apt.	Exposure:	Southeast
Bedrooms:	2+1	Washrooms:	2
Heat:	Forced Air/Gas	Air Conditioning:	Central
Storage:	Ensuite + Owned	Parking Spaces:	2 (1 Owned, 1 Exclusive)