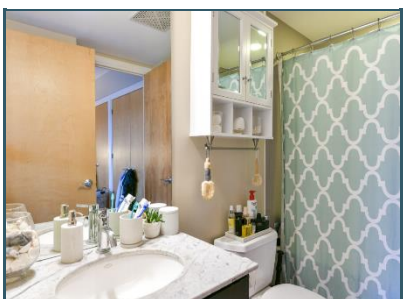
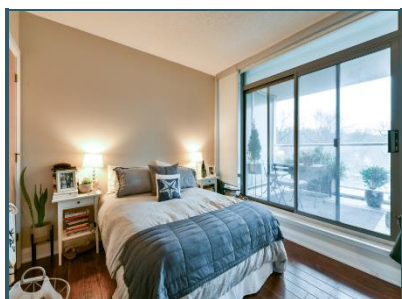
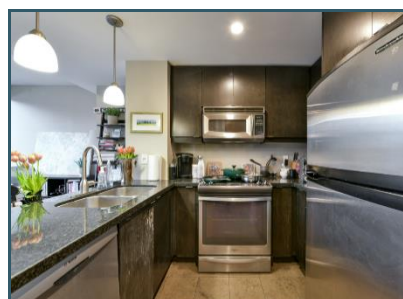
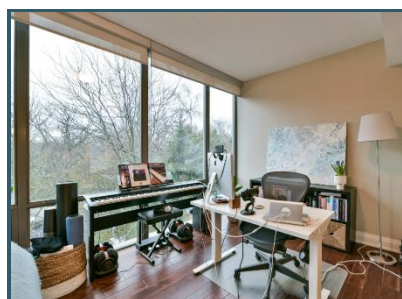
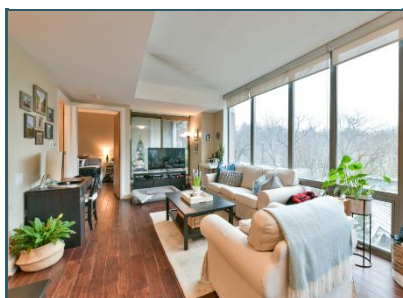


SOLD

Representing
Seller

403-383 ELLIS PARK ROAD



'Home on the Park' is a fabulous, in-demand, boutique building steps from High Park and Bloor West Village. This fantastic one-bedroom unit offers 735 square feet of living space, plus a charming south-facing terrace boasting views of the park. The spacious living/dining area is bathed in natural light and features a walk-out to the terrace. The functional kitchen offers full-sized stainless steel appliances, overlooking the living/dining room and the primary bedroom includes tree-top views and another walk-out the terrace. The layout of this beautiful condo is highly functional with no wasted square footage. Life at 'home on the park' is waiting for you!

To view more of this beautiful home, [click here](#).

DAVID
NICHOLS

List Price:	\$799,000	Sale Price:	\$910,000
Community:	High Park-Swansea Community (Toronto W01)		
Type:	Condo	Exposure:	South
Bedrooms:	1	Washrooms:	1
Heat:	Heat Pump/Other	Air Conditioning:	Central
Garage:	Underground	Parking Spaces:	1
Lockers:	2	Concierge:	Yes